

S h a t o t t o

FeildenCleggBradley**Studios**

# **Aga Khan Academy, Dhaka, Bangladesh**

**Collaborating for sustainable development  
Shatotto and Feilden Clegg Bradley Studios  
June 2020**

## Partnerships

### Architects:

Shatotto, Dhaka

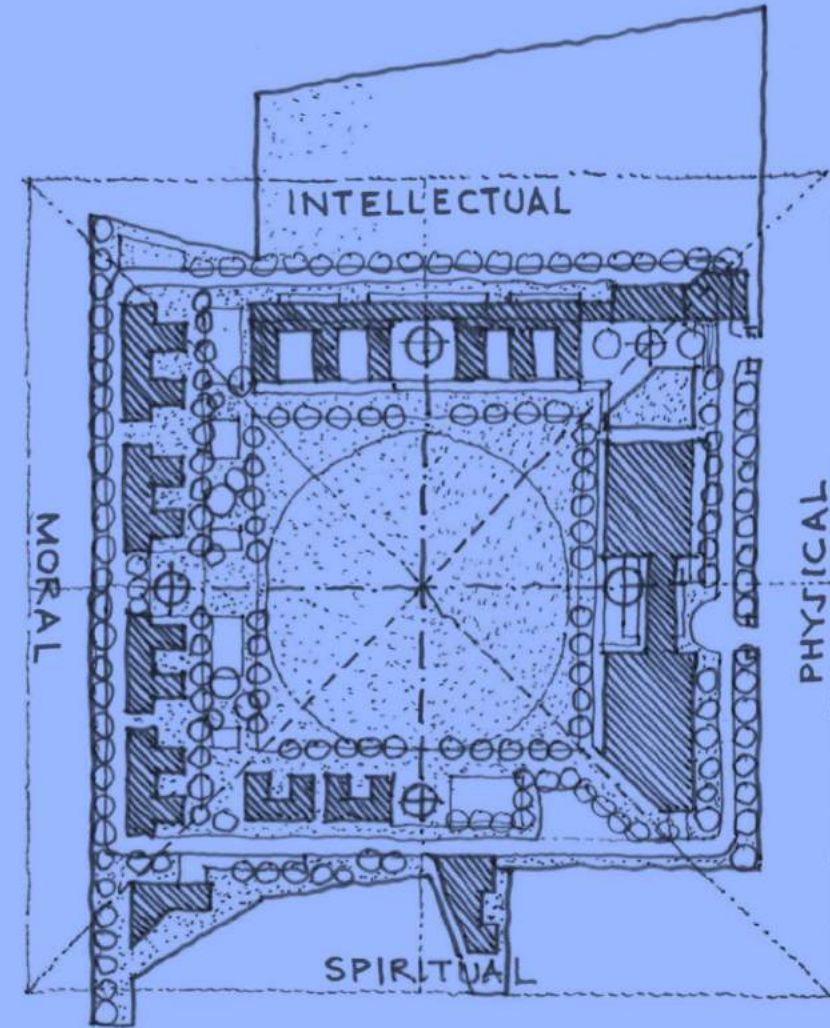
+

Feilden Clegg Bradley Studios, London

Max Fordham and EMCS

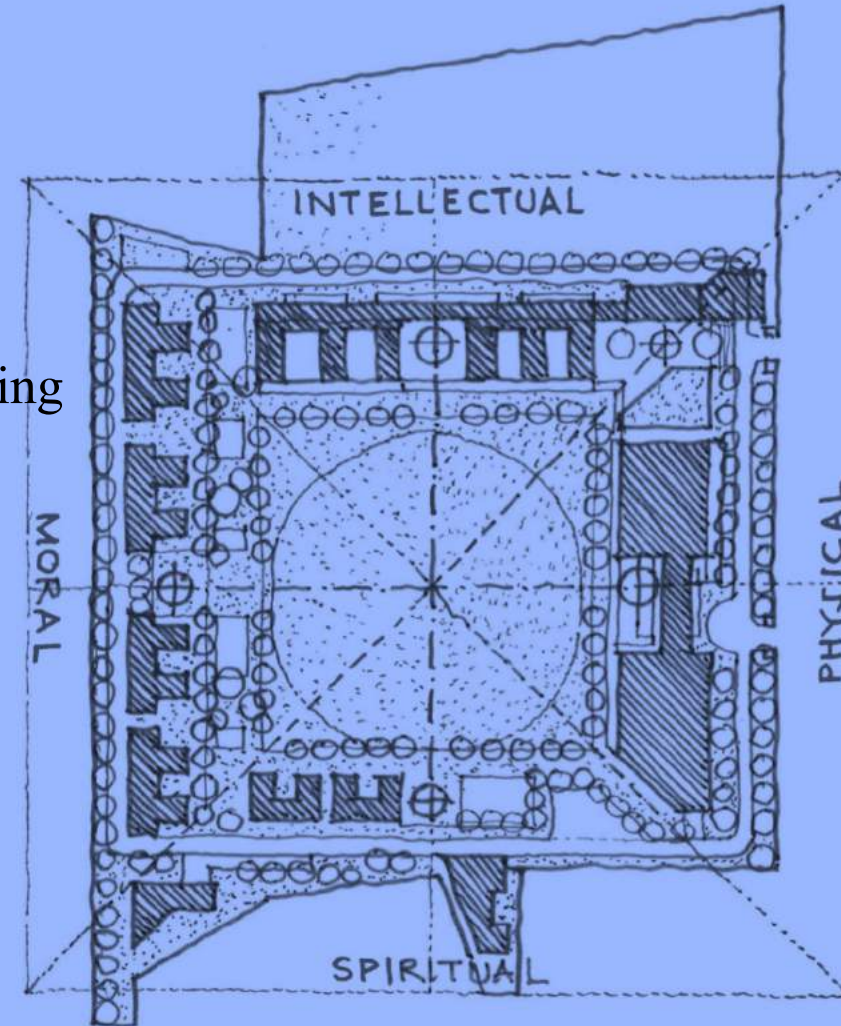
AKTII and TDM

Grant Associates with Shatotto



## Key Issues

- Working in partnership
- Balancing open space and building in a rapidly urbanising context
- A comfortable place for learning in the climate
- A Place with historical resonance
- Testing and learning through building prototype





# The Aga Khan Academy, Dhaka, Bangladesh – collaborating for sustainable development



## AGA KHAN ACADEMIES WORLDWIDE

- Operating Academy
- In construction and/or design
- Land acquired
- Market and land selection studies underway
- Future sites

Mombasa, Kenya  
Nairobi, Kenya  
Antananarivo, Madagascar  
Kampala, Uganda  
Maputo, Mozambique  
Dar es Salaam, Tanzania  
Bamako, Mali  
Kinshasa, Democratic Republic of the Congo  
Kabul, Afghanistan  
Bishkek, Kyrgyz Republic  
Dushanbe, Tajikistan  
Khorog, Tajikistan  
Damascus, Syria  
Salamieh, Syria  
Hyderabad, India  
Dhaka, Bangladesh  
Karachi, Pakistan

Lisbon, Portugal



## Mission Statement:

*"The Academy will identify and nurture exceptional young people from any background with the potential to become effective, ethical leaders."*

*It will be a joyful community of lifelong, fearless learners who are culturally-rooted and internationally-minded. ‘*

Mombasa



Hyderabad



Maputo



Dar Es Salaam



Damascus





The Aga Khan Academy, Dhaka, Bangladesh – collaborating for sustainable development





# The Aga Khan Academy, Dhaka, Bangladesh – collaborating for sustainable development

## The 17 Sustainable Development Goals



## The Aga Khan Academy – meeting sustainable development goals





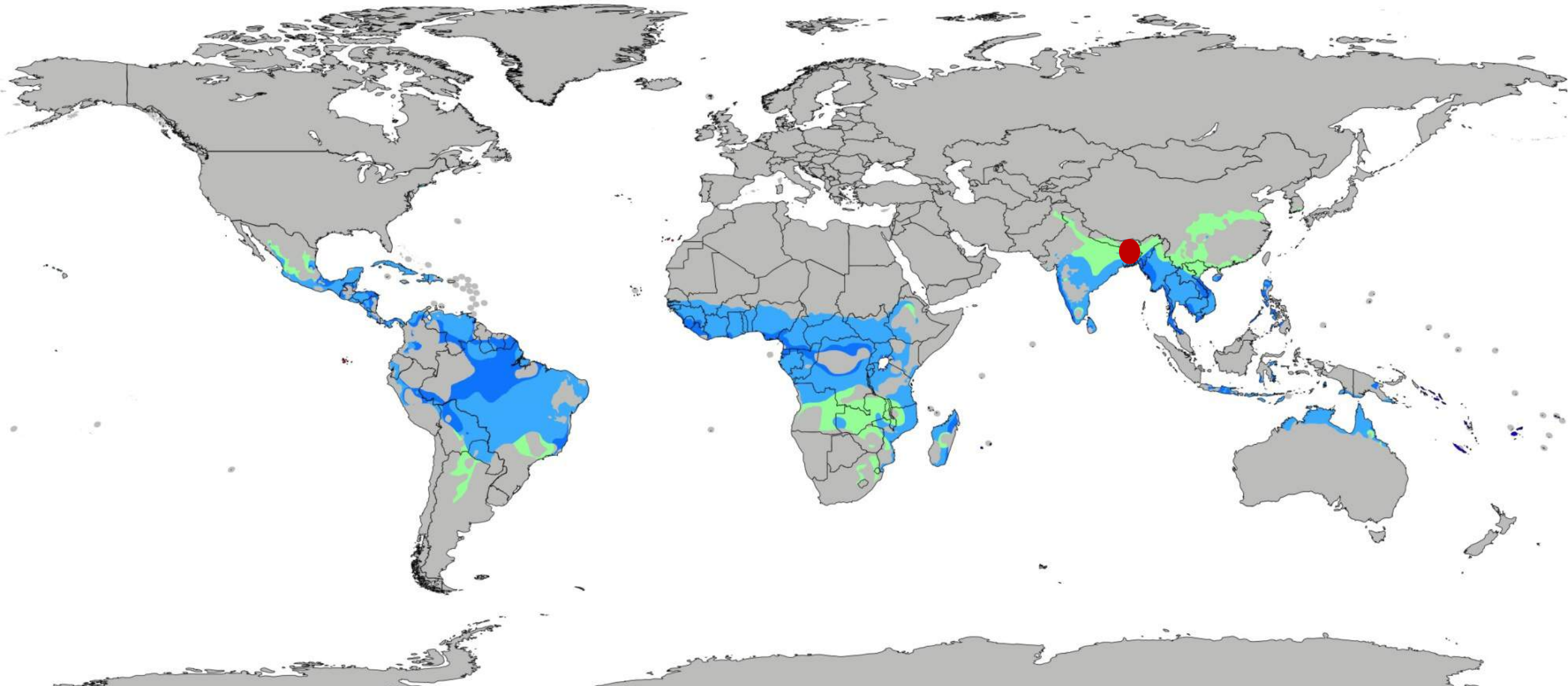
Bangladesh



# Bangladesh Climate Zones

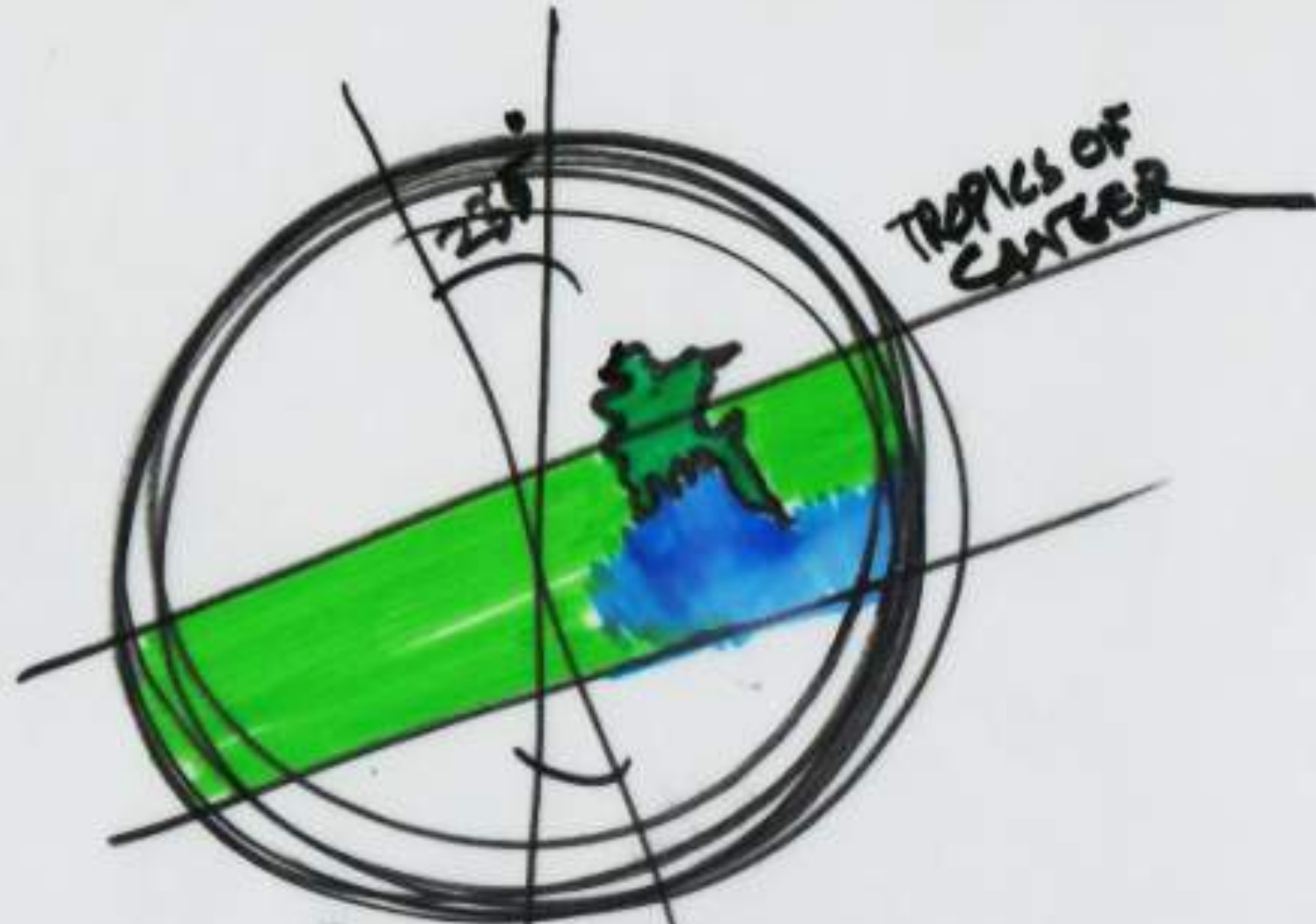
-  Cwa Temperate, Dry Winter, Hot Summer
-  Am Tropical Monsoon
-  Aw Tropical Savannah

World map of Köppen-Geiger climate classification



Bangladesh has a Subtropical monsoon climate with 6 key seasonal variations in rainfall, high temperatures and humidity



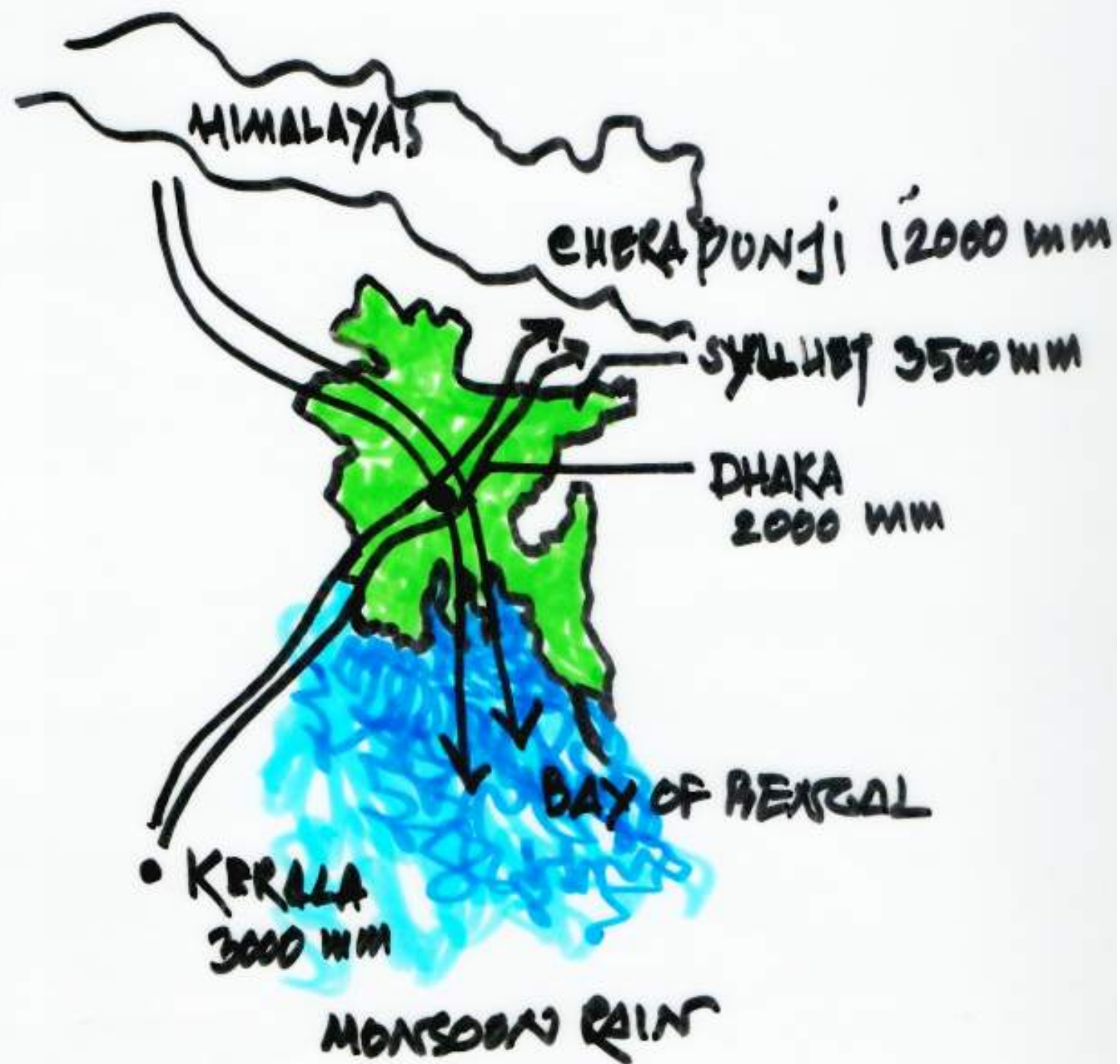


BANGLADESH

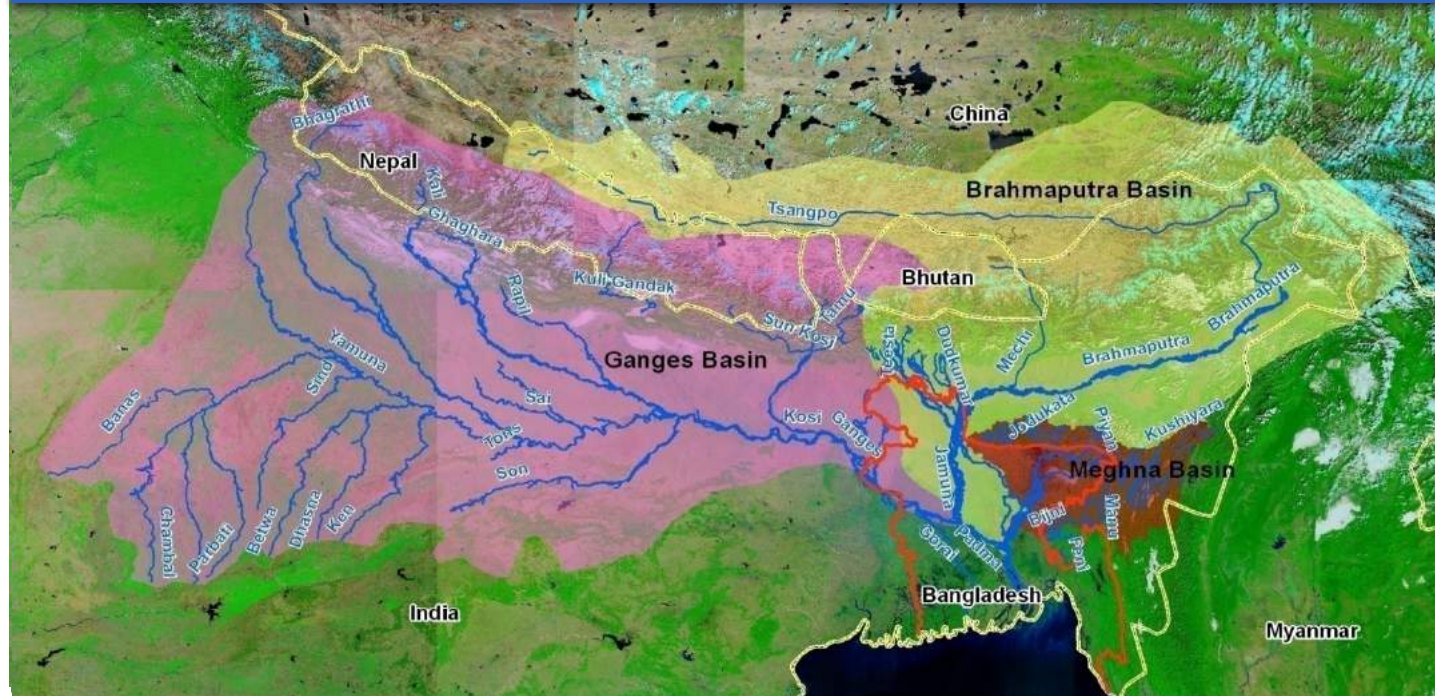
Partly TROPICAL

Partly NOT TROPICAL





# Regional Fluvial Systems



Ganges Basin		Brahmaputra Basin		Meghna Basin	
Catchment Area (Sq. Km)	1087000	Catchment Area (Sq. Km)	552000	Catchment Area (Sq. Km)	82000
Av. Annual rainfall (mm)	1200	Av. Annual rainfall (mm)	1900	Av. Annual rainfall (mm)	4900
Av. Annual Discharge (m <sup>3</sup> /s)	11000	Av. Annual Discharge (m <sup>3</sup> /s)	20000	Av. Annual Discharge (m <sup>3</sup> /s)	4600
Max. Discharge (m <sup>3</sup> /s)	78000	Max. Discharge (m <sup>3</sup> /s)	100000	Max. Discharge (m <sup>3</sup> /s)	20000
Sediment transport (m ton/yr)	550	Sediment transport (m ton/yr)	590	Sediment transport (m ton/yr)	13











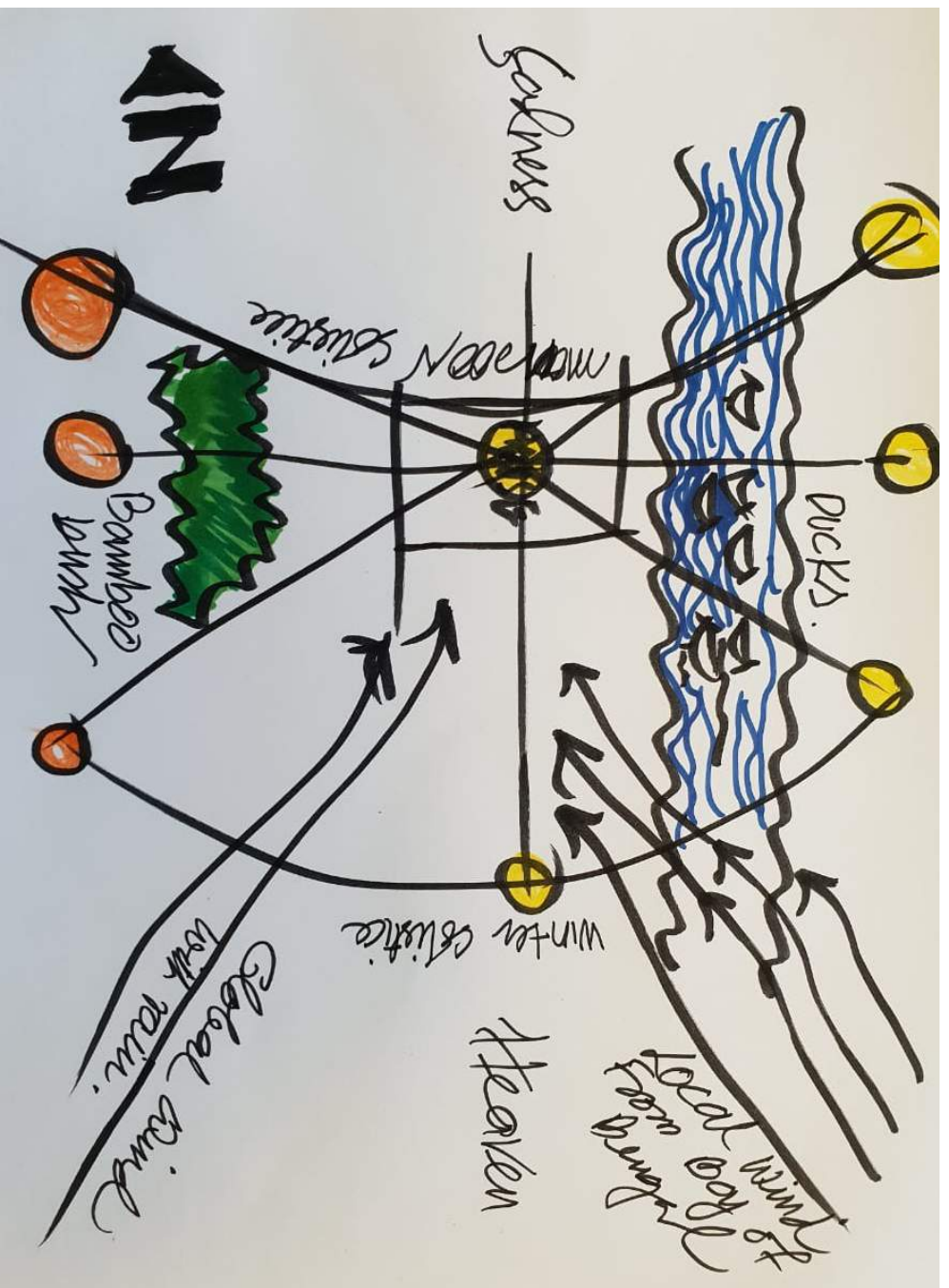


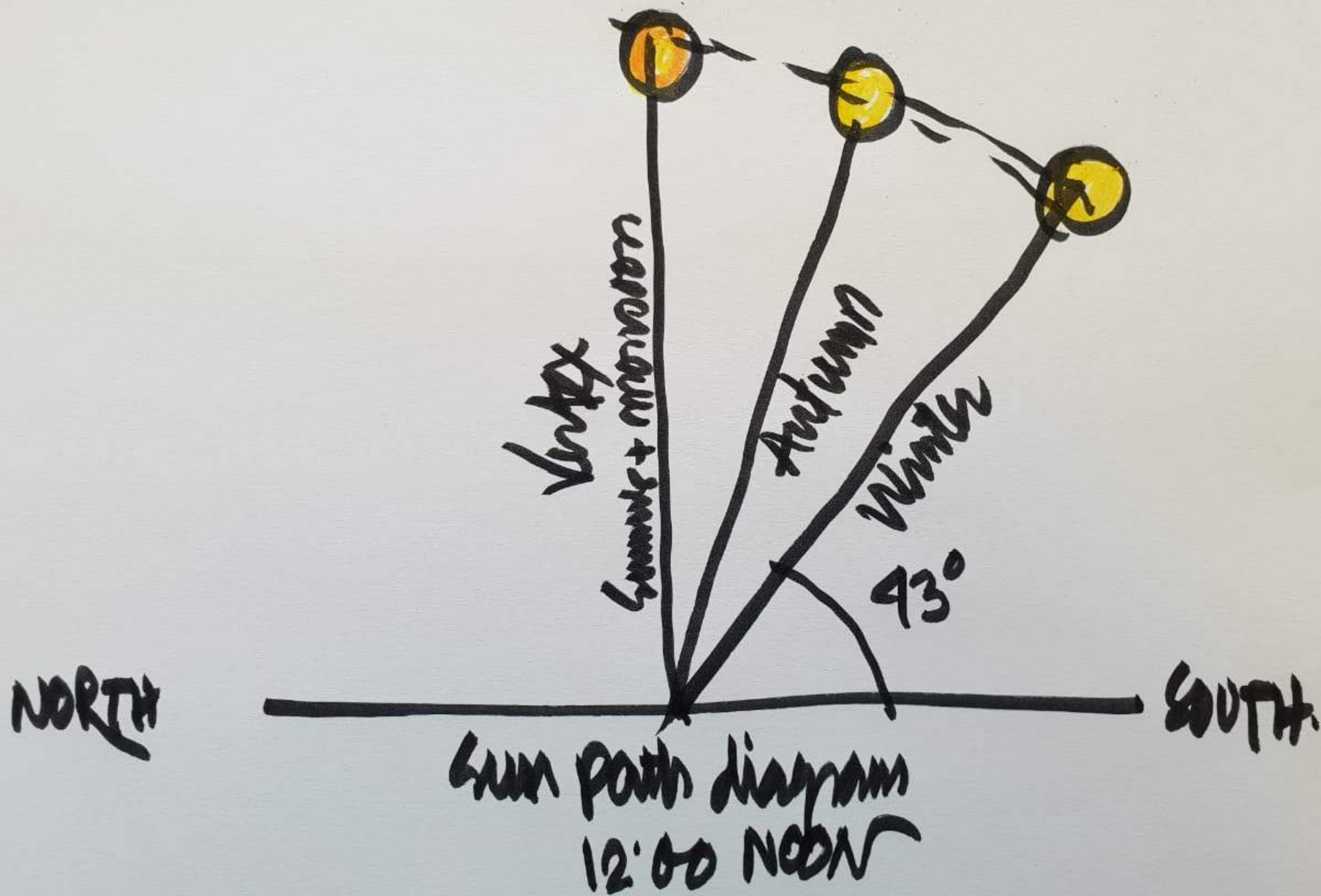










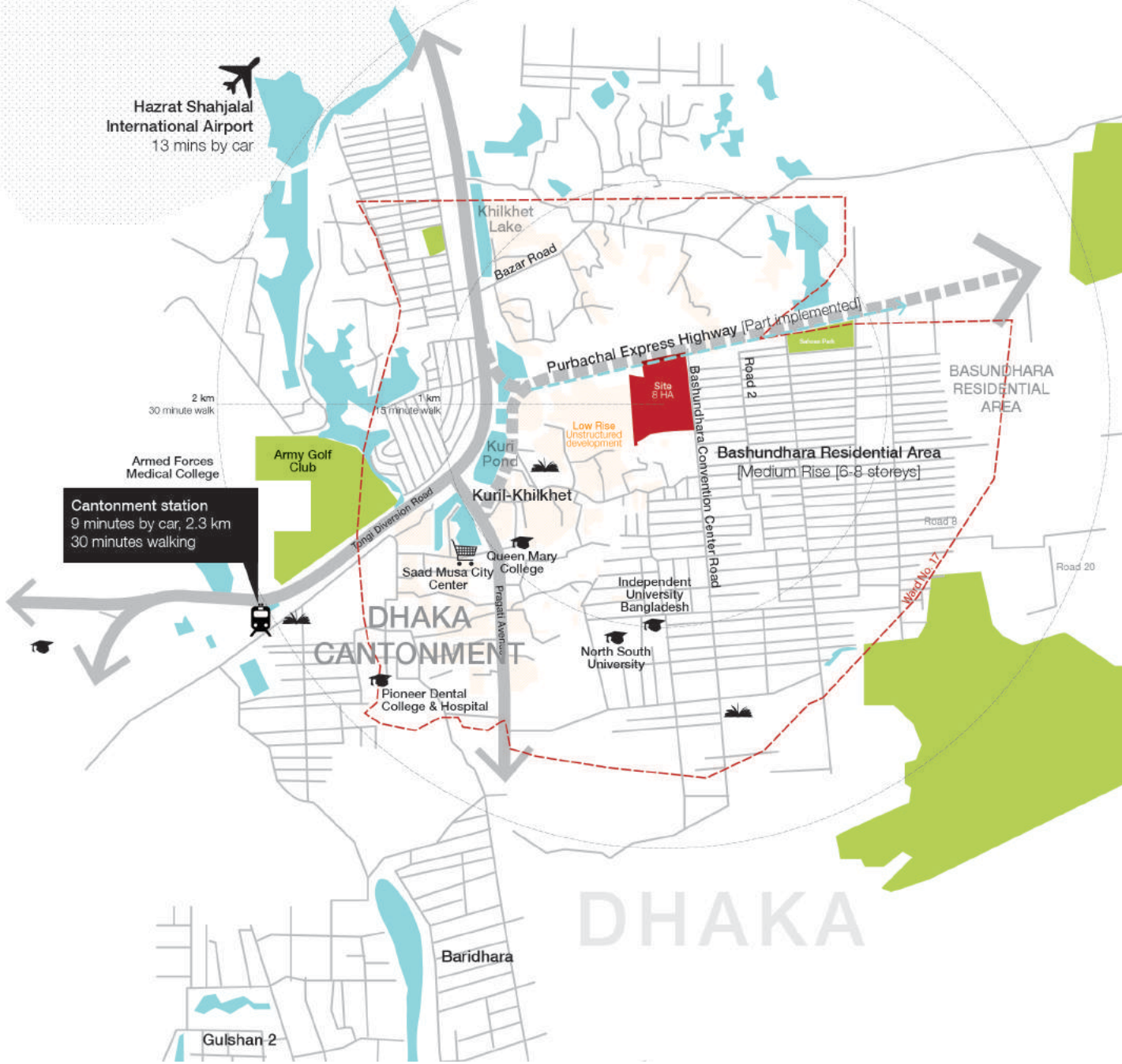








Urban site - green lung in an expanding city





FeildenCleggBradleyStudios



# The Academies brief across different sites



Dhaka



Maputo



Hyderabad

FeildenCleggBradleyStudios

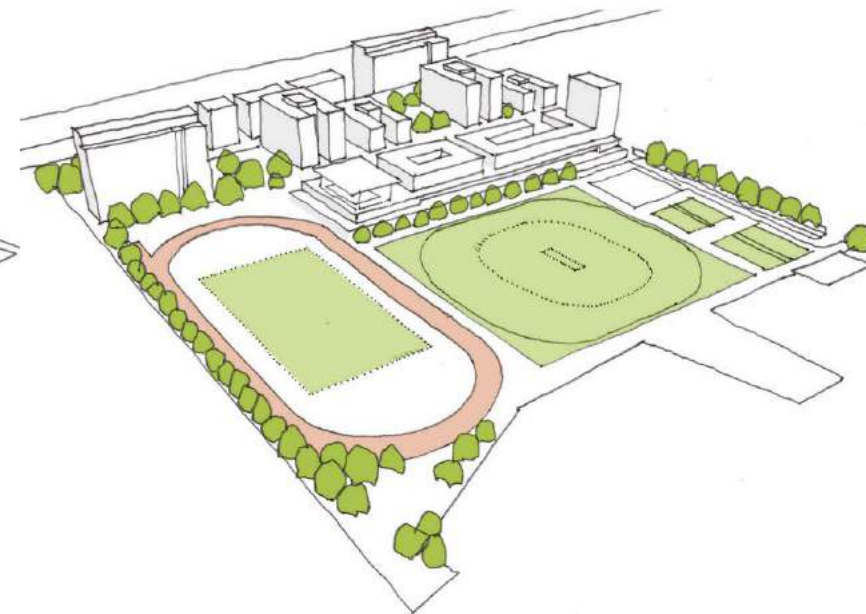
Low density



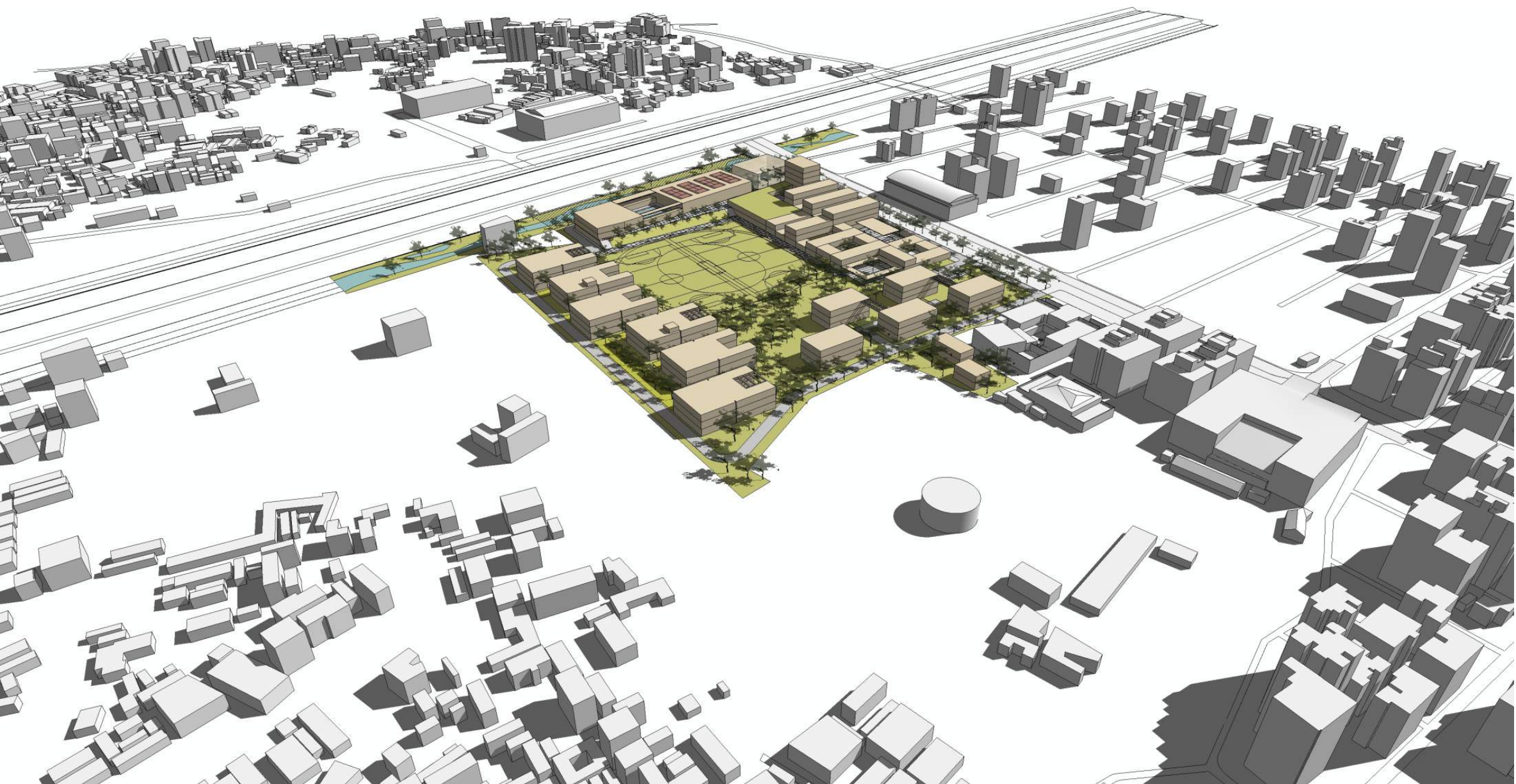
Medium density



High density

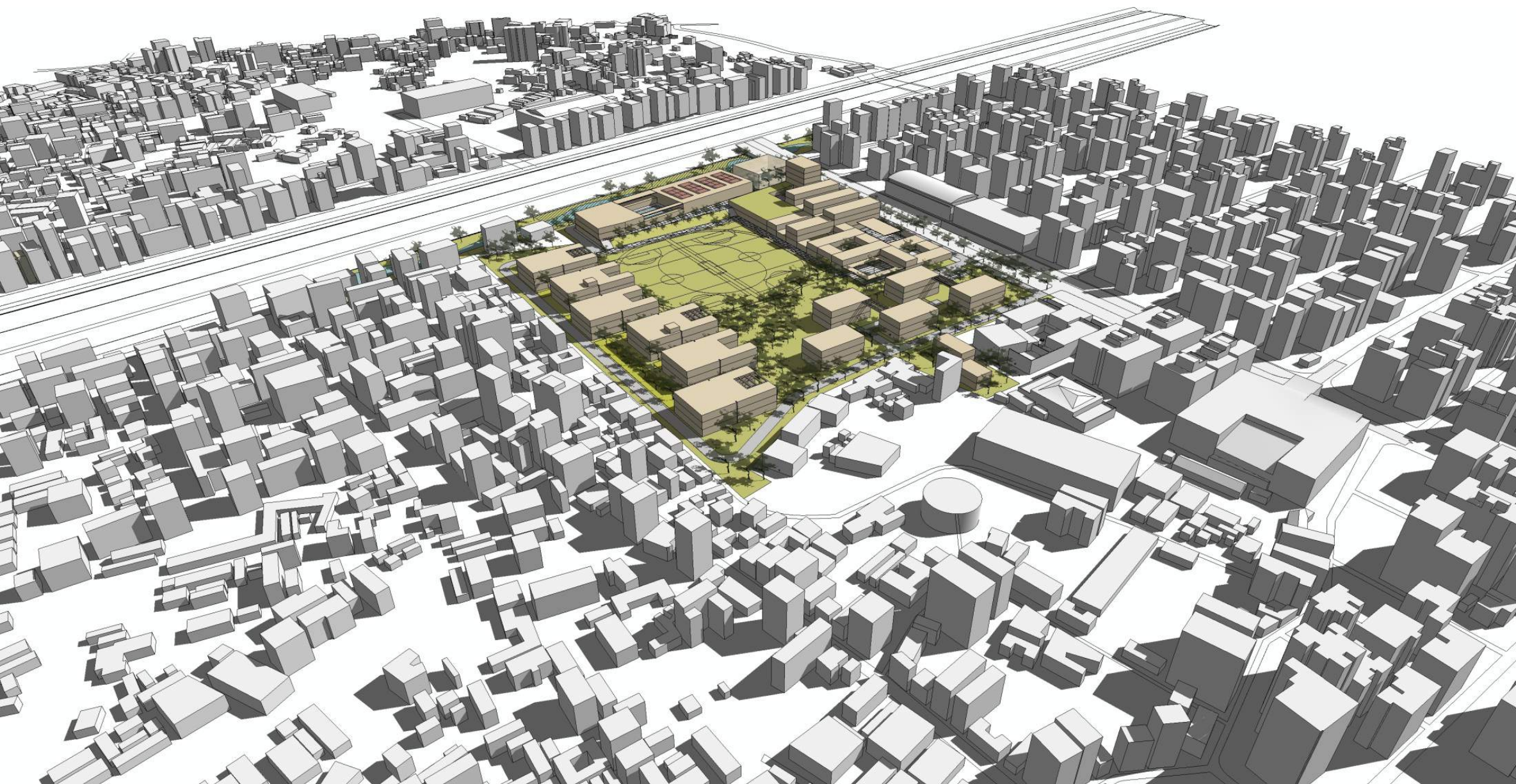






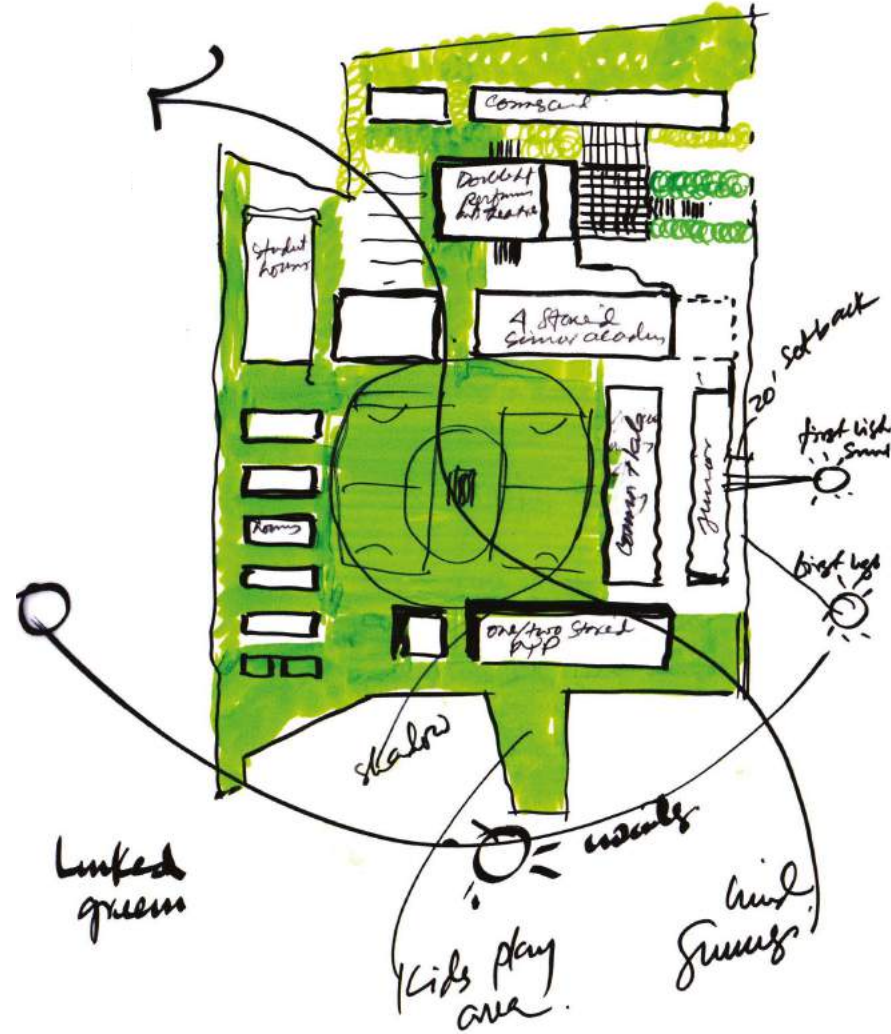


Projected urban density 2025



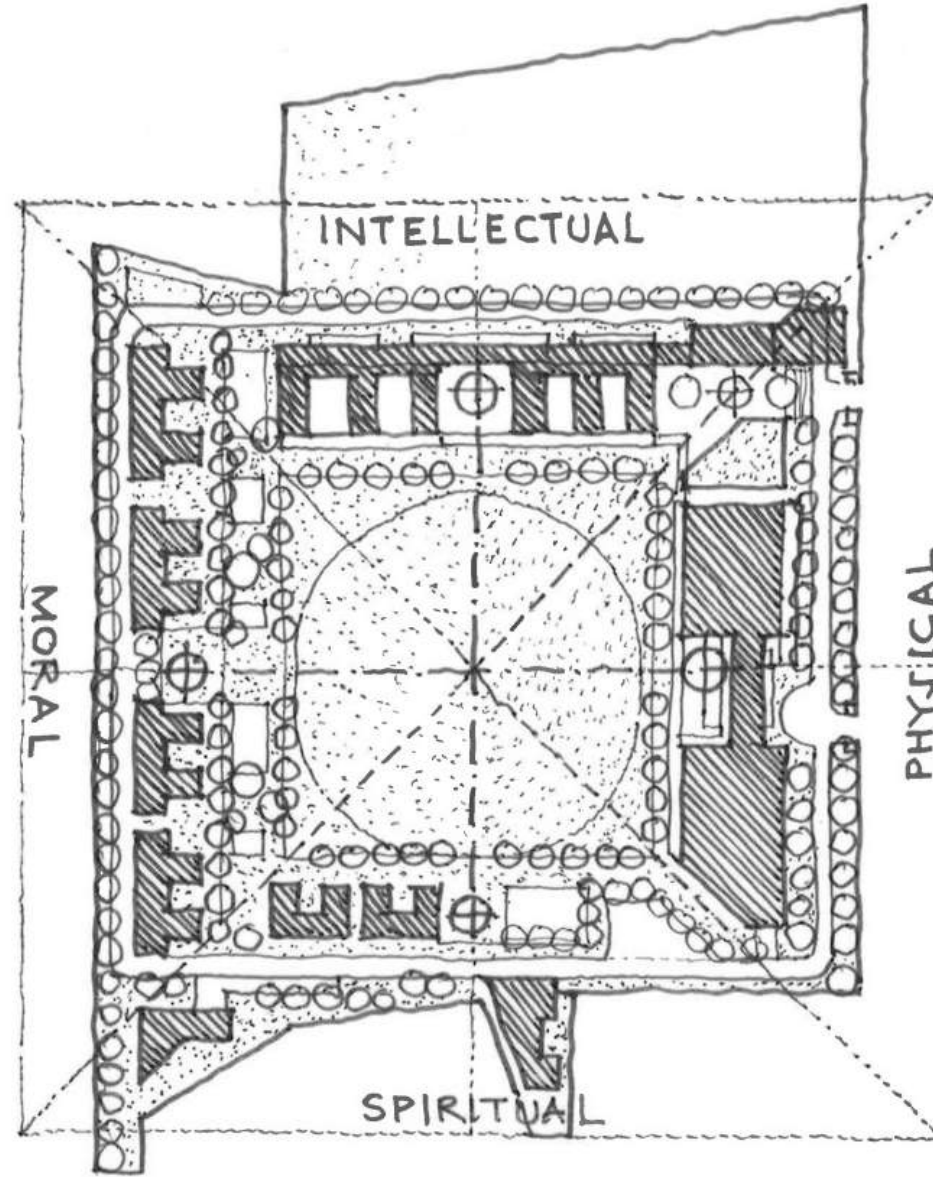


**15** LIFE ON LAND

The icon for SDG 15, 'Life on Land', features a stylized white tree with a thick trunk and a rounded canopy. Above the tree, three white birds are depicted in flight, moving towards the right. The entire icon is set against a solid green square background.



# Elemental principles in a complete education

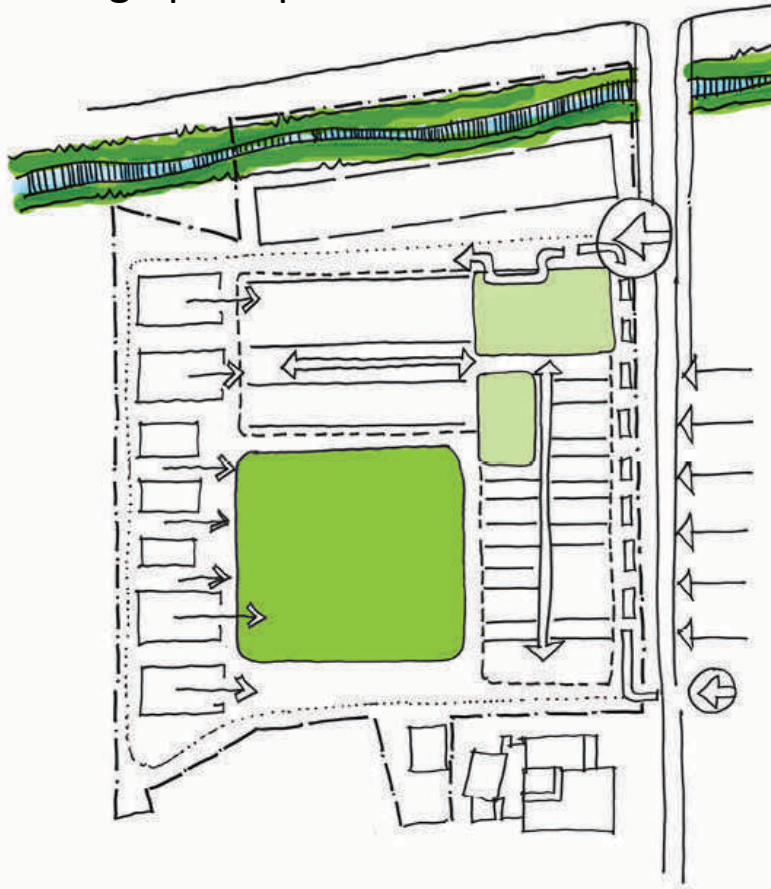


A footprint for a complete education

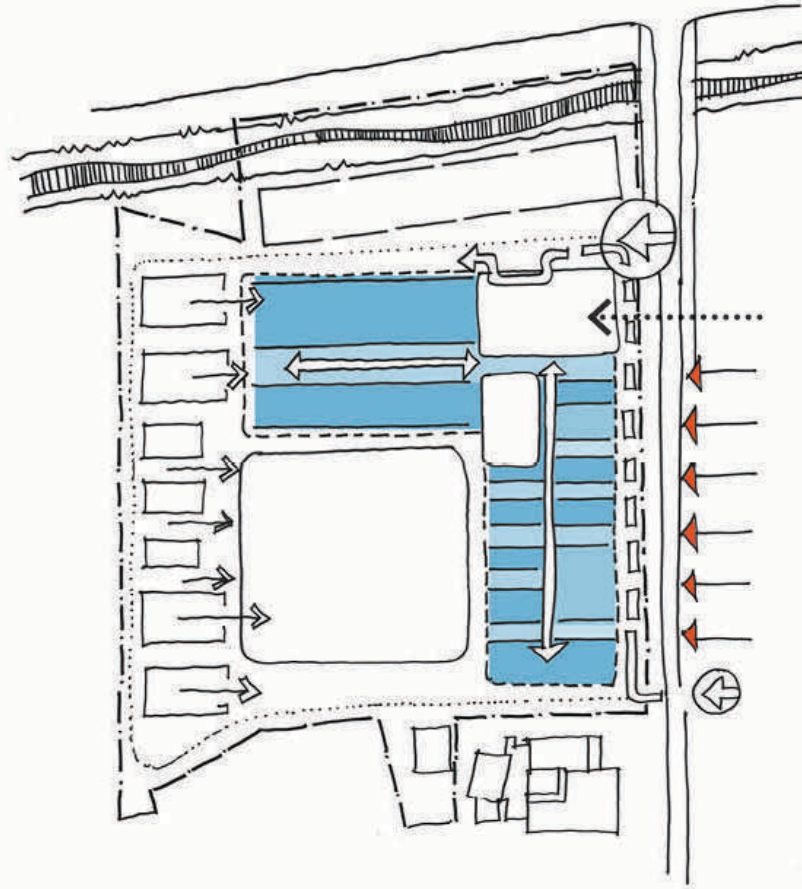




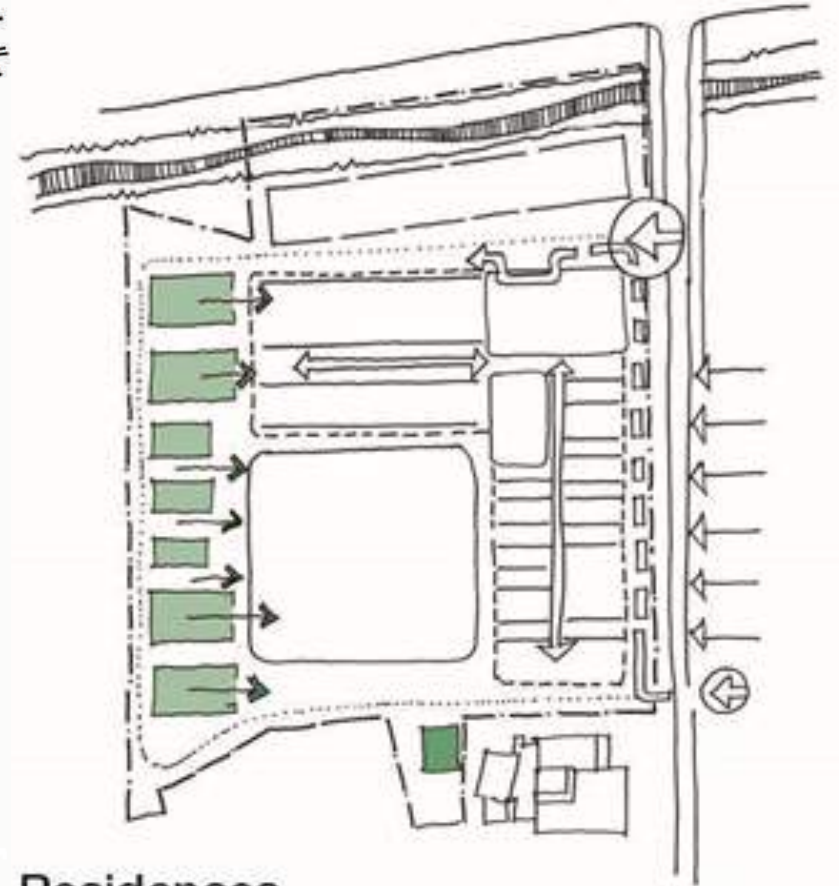
## Design principles



Open space or 'Maidan'



Academy presence



Residences

Professional Development of Teachers



A Learning Community



The "Whole Child"



Co-education



A Campus and its Neighbourhood



Phasing of Campus Development





Historical references





## Historical references











# Materials and language









Full scale mock-up for testing design and quality



South Elevation



East Elevation



West Elevation



Full scale mock-up for testing design and quality



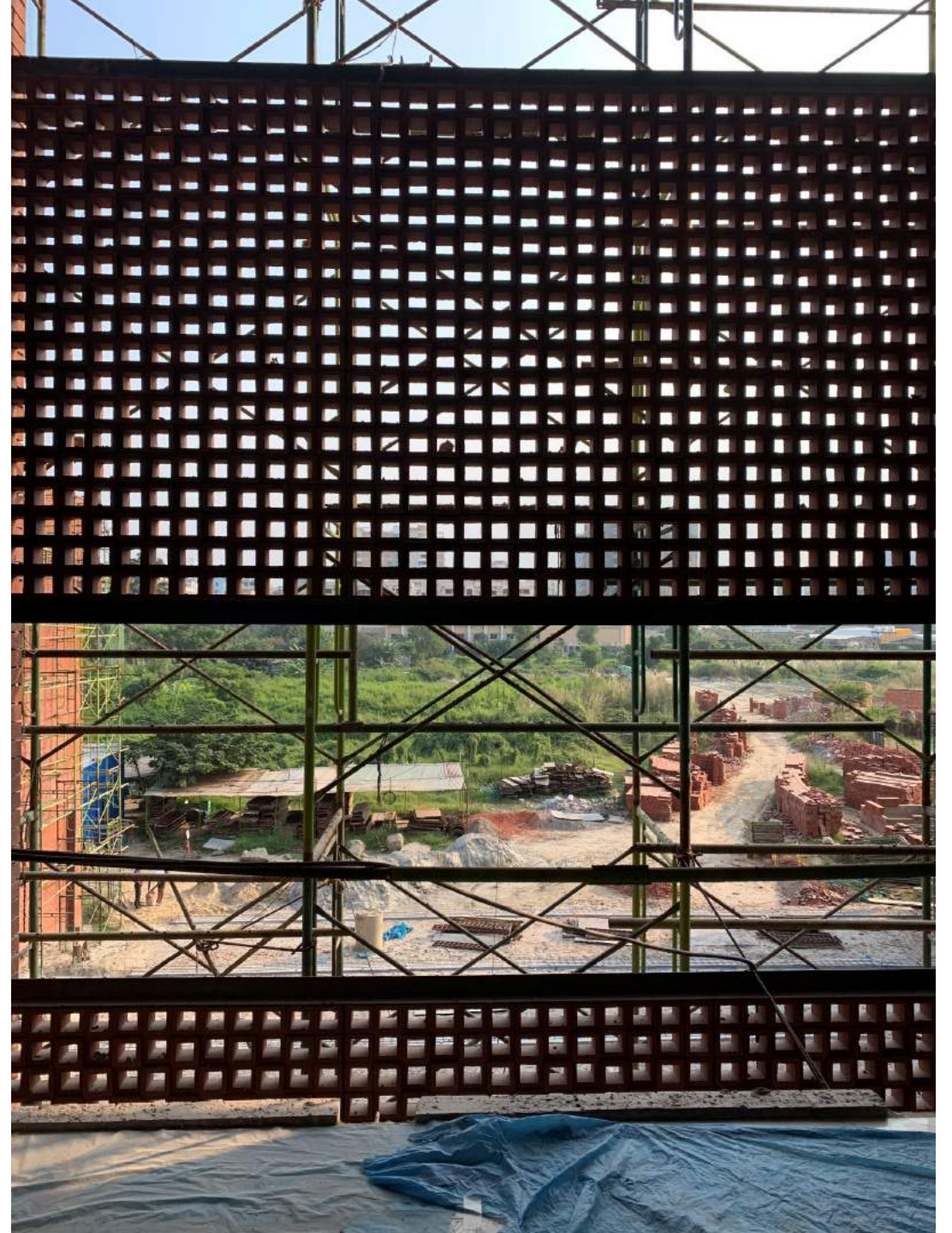










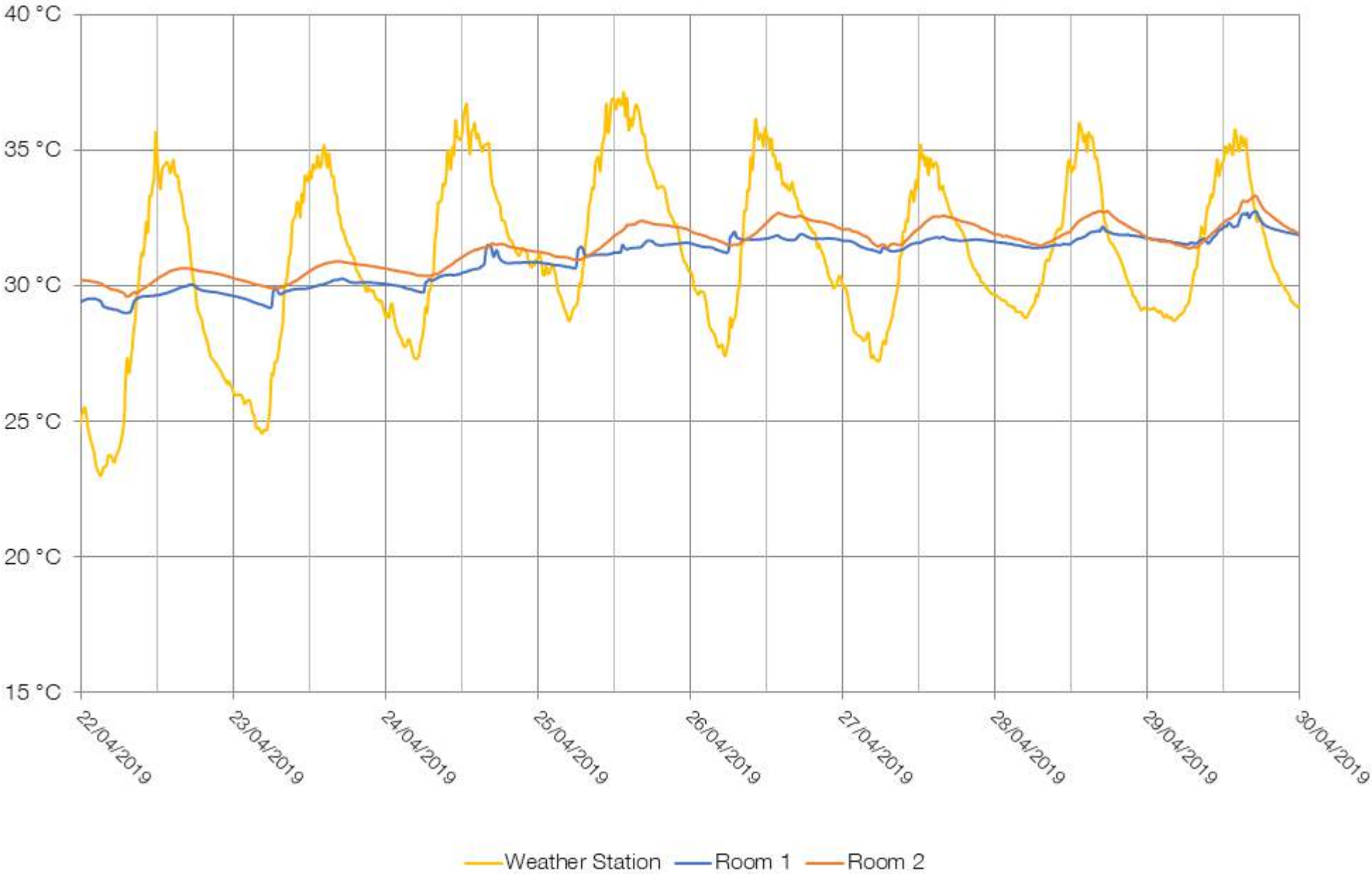








Initial post occupancy evaluation



















Shaded circulation





আগা খান একাডেমী ঢাকা  
The Aga Khan Academy  
আগা খান একাডেমী ঢাকা

আগা খান একাডেমী ঢাকা  
The Aga Khan Academy dhaka  
আগা খান একাডেমী ঢাকা  
The Aga Khan Academy dhaka  
আগা খান একাডেমী ঢাকা  
আগা খান একাডেমী ঢাকা

আগা খান একাডেমী ঢাকা  
The Aga Khan Academy dhaka  
আগা খান একাডেমী ঢাকা  
The Aga Khan Academy dhaka  
আগা খান একাডেমী ঢাকা  
আগা খান একাডেমী ঢাকা

আগা খান একাডেমী ঢাকা  
The Aga Khan Academy dhaka  
আগা খান একাডেমী ঢাকা  
The Aga Khan Academy dhaka  
আগা খান একাডেমী ঢাকা  
আগা খান একাডেমী ঢাকা







School

















## Richness of landscape

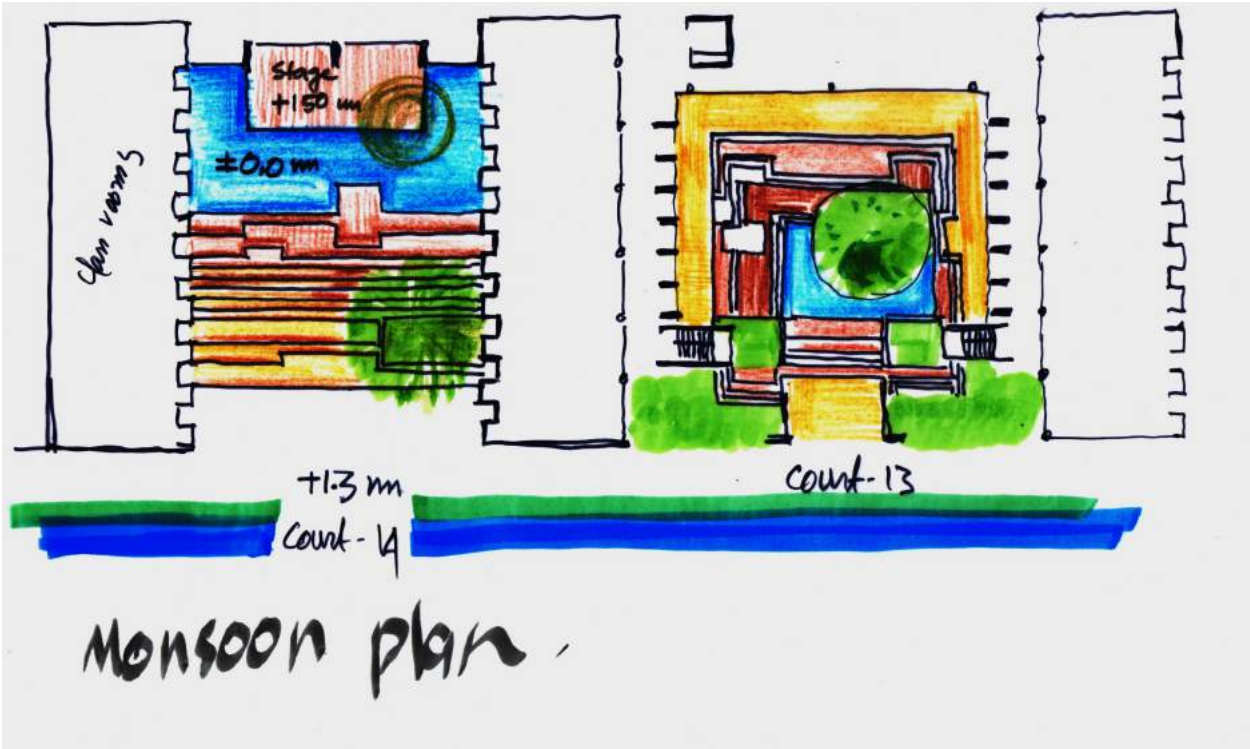
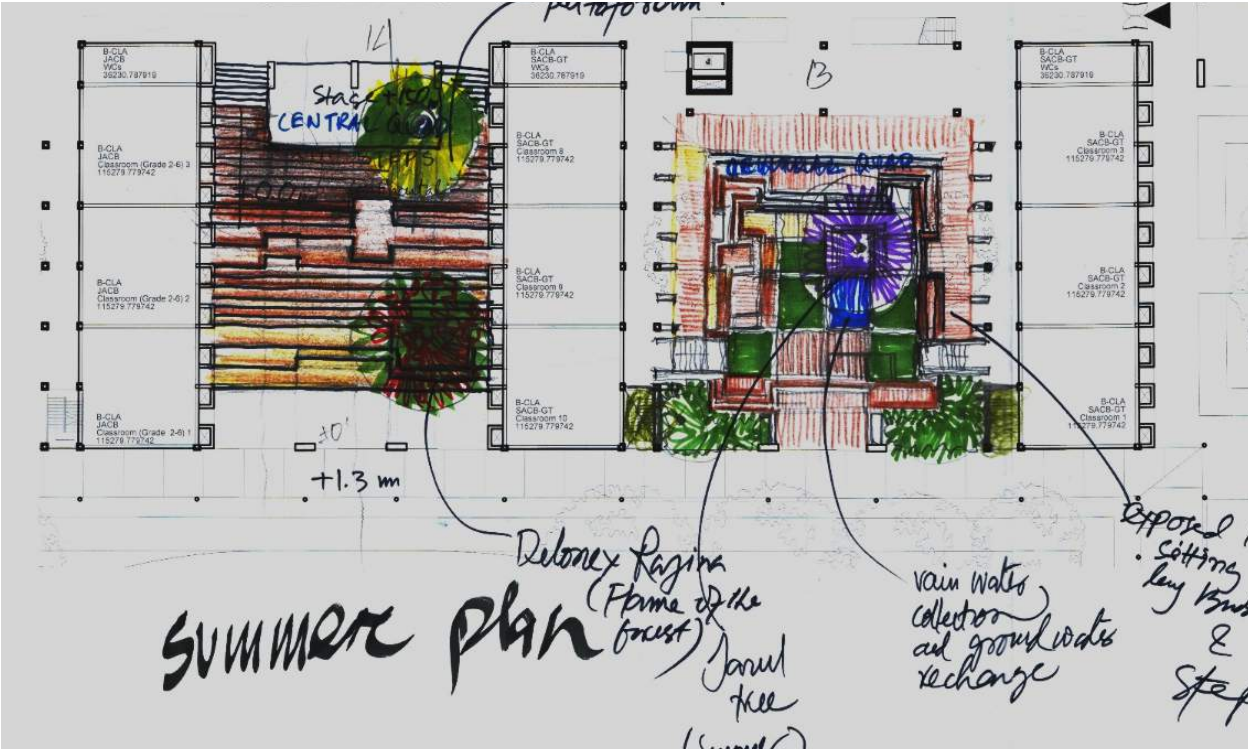








# Seasonal Plans







DURING LOW INTENSITY RAINFALL





DURING MEDIUM INTENSITY RAINFALL





DURING HEAVY RAINFALL





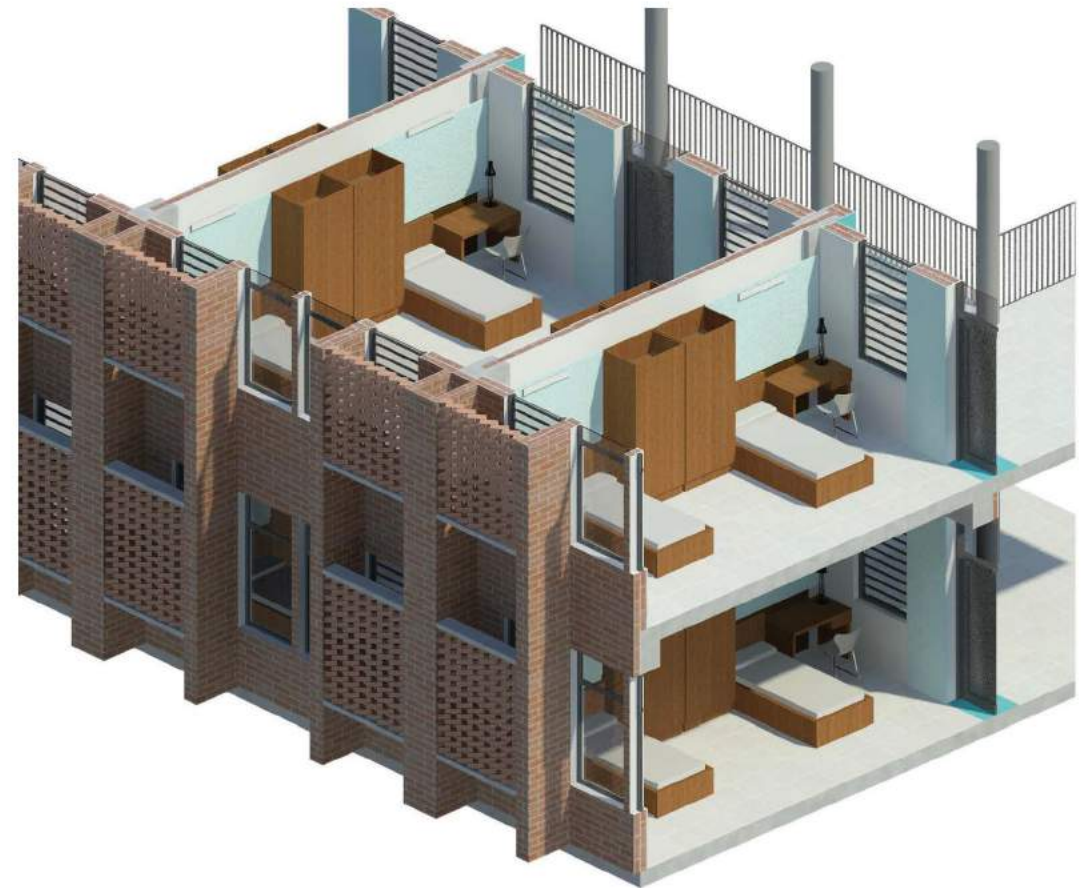






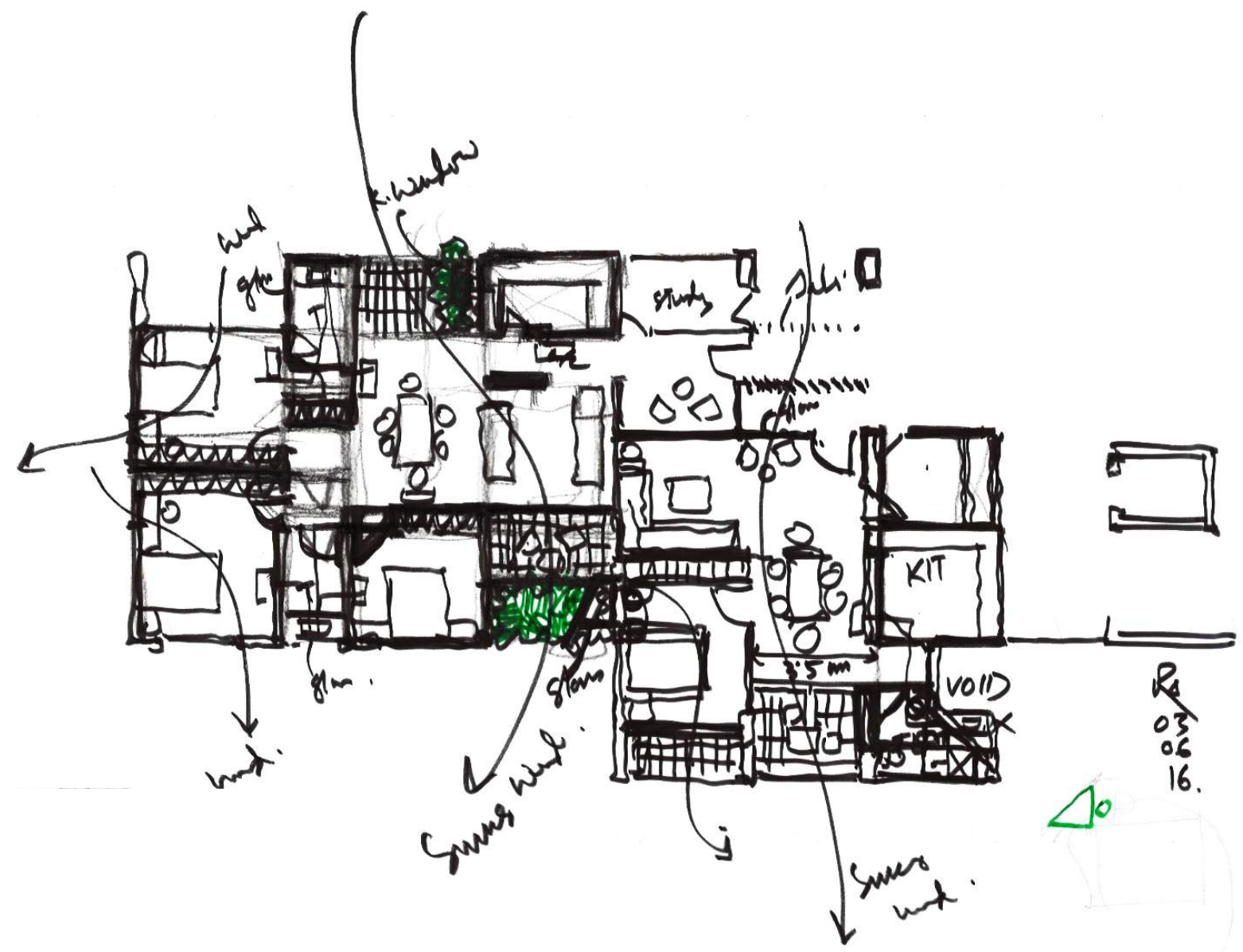








Residences

























Kadamba/ burflower tree



Indian gooseberry, Amla



Bengal currant



Rangan



Orboroi



Ashwattha tree



Champak, Shapna Chapa



Ashoka tree



Kathbadam tree



Queen's crape-myrtle, Jarul



Butterfly / Hong Kong Orchid



Modhumoti/ Modhumanjuri



Bengal trumpet, Neelghonto



Bagan bilash



Bleeding heart vine



Bamboos



Screw pine, Keya



Rokto Joba



Jungle Flame, Rangan



Areca Palm



Umbrella Sedge, Golamethi



Indian shot, Kolaboti



Shapla



Flame of the forest, Palash



Indian Almond tree, Kathbadam



Elephant apple, Chalta



Indian rose chestnut, Nageshar



Indian Neem tree



Spanish cherry, Bakul



Blackboard or devil tree, Chatim



Orange jessamine, Kamini



Wooden Rose, Kath Golap













**S h a t o t t o**

**FeildenCleggBradleyStudios**







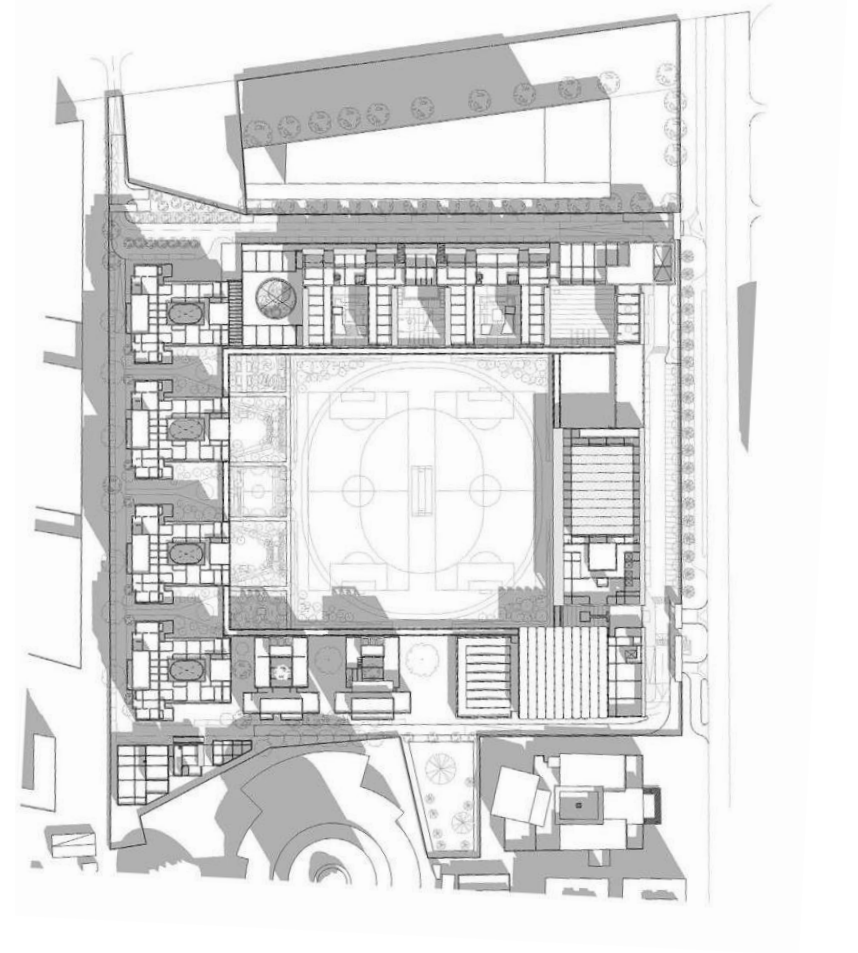
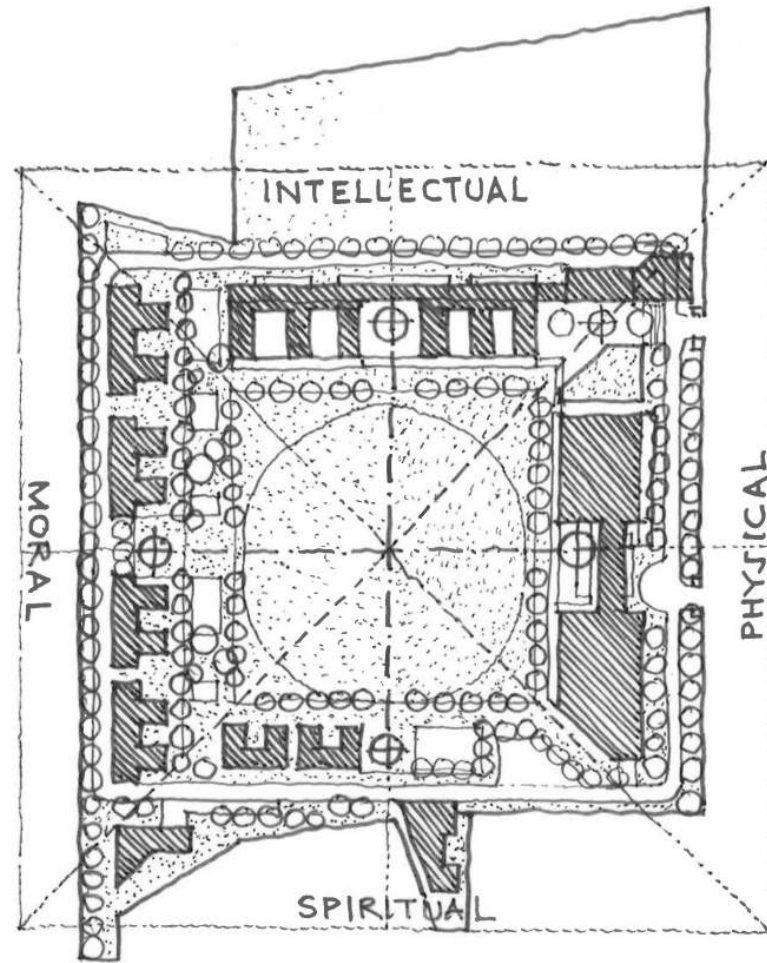
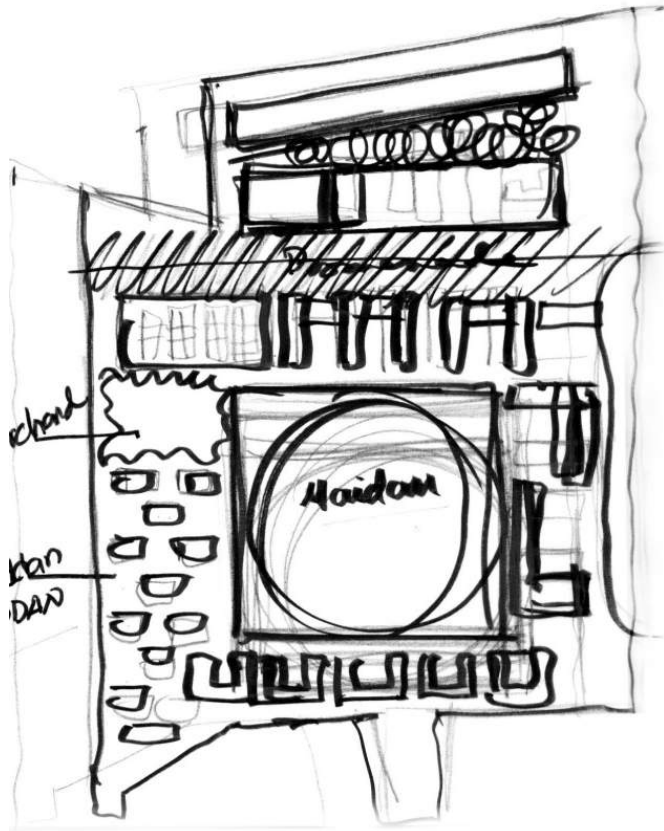


- |                    |                           |                                 |
|--------------------|---------------------------|---------------------------------|
| ① Academy Building | ⑤ Performing Arts Theatre | ⑨ Health & Wellness             |
| ② Senior School    | ⑥ The Commons             | ⑩ DP Student Housing            |
| ③ Junior School    | ⑦ Sports Centre           | ⑪ Head of Academy's Residence   |
| ④ Nursery          | ⑧ Swimming Pool           | ⑫ MYP Student & Faculty Housing |









Professional Development of Teachers



A Learning Community



The "Whole Child"



Co-education



A Campus and its Neighbourhood



Phasing of Campus Development

